



## N620 UHF Integrated Reader/Writer with Built-in Antenna



### Overview:

The EPCglobal™-certified NephSystem Technologies N620 long range and high performance Integrated reader is a stationary, UHF Gen 2 RFID reader/writer that operates at the global 860MHz ~ 960MHz frequency bands, it has most kinds of interfaces built in, such as RS232 serial, RS485, TCP/IP Ethernet port as well as Wieland 26/34. The optional 802.11 b/g Wi-Fi or POE (Power over Ethernet) is also available. With its powerful Impinj R2000 RFID engine and the excellent anti-collision performance, it fully supports EPC CLASS1 G2, ISO18000-6B protocol tags.

N620 UHF integrated Reader can be widely applied and deployed in many RFID related application fields such as Logistics, Access Control, Anti-counterfeit and Industrial Production Process Control System, etc.



### Main Features:

- ❖ 860~960MHz global frequency band (frequency could be adjusted through software)
- ❖ Based on impinj R2000 core design as well as integrated high performance 9dBi antenna, excellent performance in terms of reading range, multi-tag detection as well as awesome anti-collision feature
- ❖ RF output power up to 30dbm (software adjustable)
- ❖ Built-in high performance 9dbi circular type antenna, one additional TNC type of antenna port is available on board
- ❖ Wide power input range from 9V till 24VDC, POE (Power over Ethernet) is optional
- ❖ Support RS232, RS485, Wiegand 26/34, TCP/IP communication interfaces, optional Wi-Fi feature is available
- ❖ Optional two channels of dry-contact relays
- ❖ IP67 rated and Ultra rugged design, ideal for any outdoor applications in harsh environment

### NephSystem Technologies

Delta BC, Canada

Phone: +1 604-9489063 Fax: +1 604-9489607

[www.nephsystem.com](http://www.nephsystem.com)

[sales@nephsystem.com](mailto:sales@nephsystem.com)



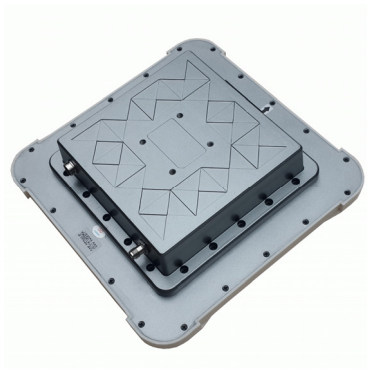
# N620 UHF Integrated Reader/Writer with Built-in Antenna



www.nephsystem.com

## Specifications:

Frequency	Global 860MHz ~ 960MHz (Software Adjustable)
Communication Interface	Built-in Ethernet and RS-232 and RS485 and Wiegand 26/34; PoE or Wi-Fi is optional
RFID Transponder Compatibility	ISO18000-6C, EPC Class 1 Gen 2; ISO18000-6B, EPC Class 1 Gen 1;
Technical Certificates	ETSI, CE, RoHS, FCC/EPC Gen2 Certification, ISO/IEC 18000-6C, ISO18000-6B
I/O Capability	1 x External indicator control port and optional 2 x dry-contact relay channels
Antenna Connection	One-built 9dBi antenna and one additional antenna port
Power requirements	External DC9V~24V Power supply Or optional PoE
Status Indication	Buzzer and LED
Transmit Power	0 to 30dBm (Software Adjustable)
Humidity	5% to 90% relative
Operating Temperature	-10° to 60°C
Storage Temperature	-20° to 75°C
Environmental Sealing	IP67
Dimension	298mm x 298mm x 105mm
Weight	2800g



### NephSystem Technologies

Delta BC, Canada

Phone: +1 604-9489063 Fax: +1 604-9489607

[www.nephsystem.com](http://www.nephsystem.com)

[sales@nephsystem.com](mailto:sales@nephsystem.com)

[www.nephsystem.com](http://www.nephsystem.com)