

NephSystem N330 Software User's Guide

- For PDA Application

Rev. 2.0.0.1



NephSystem Technologies

B-1285 56TH STREET, DELTA BC, Canada, V4L 2A6

Tel: +1 604-9489063

sales@nephsystem.com

service@nephsyste.com

support@nephsystem.com

Chapter I Bluetooth Connection

If the Bluetooth connection is going to be used with a PDA.

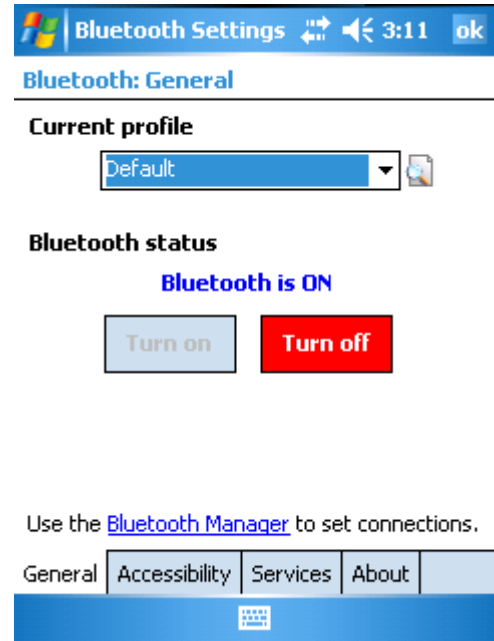
Please follow the steps listed below:

NOTE: there are many kind Bluetooth Enabled PDAs available on the market. The installation or pairing procedure with such Bluetooth PDAs will be varying from them. The following guidelines were performed on a regular HP iPAQ series PDA.

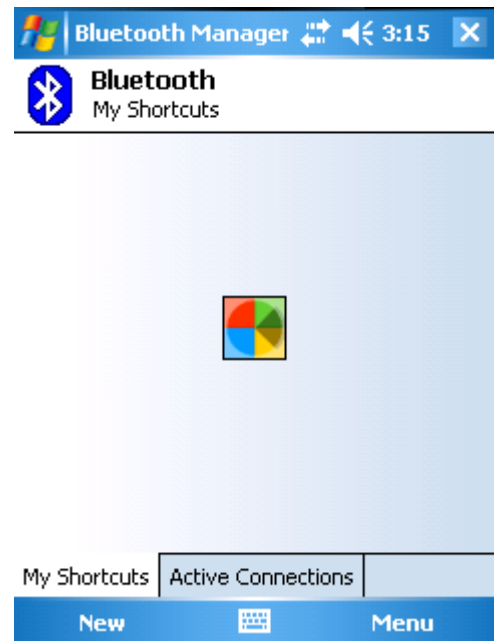
- ❖ Power on N330 and PDA
- ❖ Go to the Connections panel (“Start”->”Settings”->”Connections”) on the PDA, then click on the icon of “Bluetooth” :



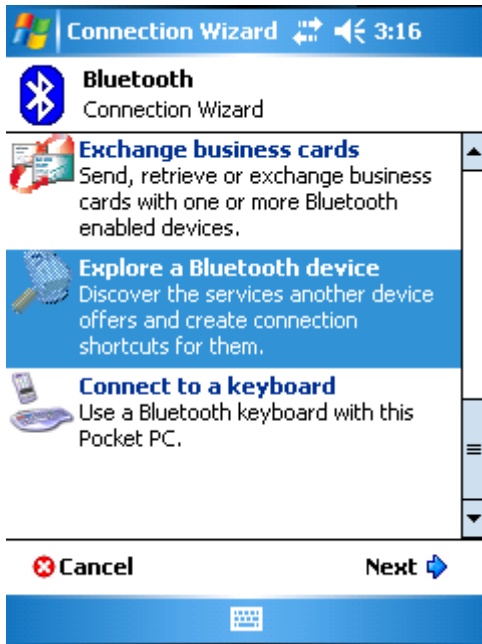
- ❖ A new panel will pop u, make sure the Bluetooth power on the PDA is ON. Then select “Bluetooth Manager” on the screen:



- ❖ Click “NEW” on the panel:



- ❖ Then select “Explore a Bluetooth device” on the panel



- ❖ The PDA will automatically try to search any Bluetooth Featured devices around and will show the Bluetooth Name of “RS-9BTRFIDReader”:



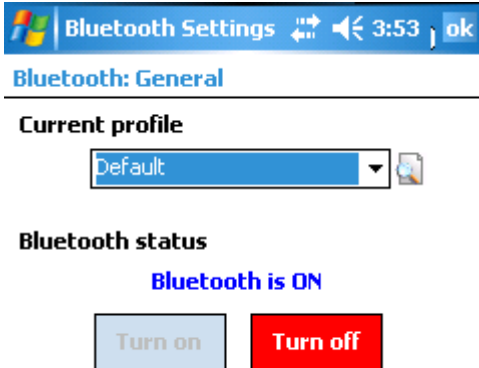
- ❖ On the next screen, double click the device on the screen:

- ❖ Click on “RS-9BTRFIDReader”, then select “Dev B” -> “Next” on the screen.
- ❖ Click “Finish” on the screen:

- ❖ For the first time of pairing, PDA will ask for the passkey for the connection. Please key in the default passkey of “1234” then press “OK”.
- ❖ After that, Bluetooth management tool will automatically set up the wireless Bluetooth connection with N330 via the Bluetooth interface.

- ❖ The Serial Port information can also be obtained by Viewing the services of the connection -

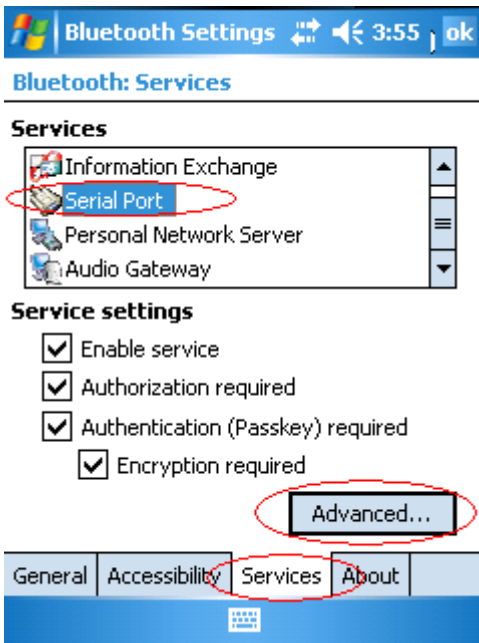
Go back to the general panel of Bluetooth Manager, then click “**Services**” tab on the bottom:



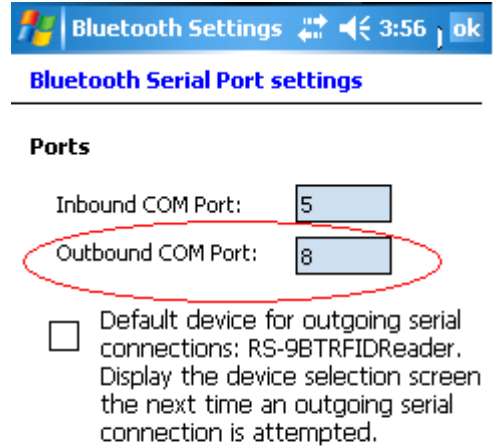
Use the [Bluetooth Manager](#) to set connections.



- ❖ Select “**Serial Port**” on the window, then click “**Advanced...**”:



- ❖ On the next window, the “**Outbound COM port**” is going to be used for the data transferring between N330 and the PDA.

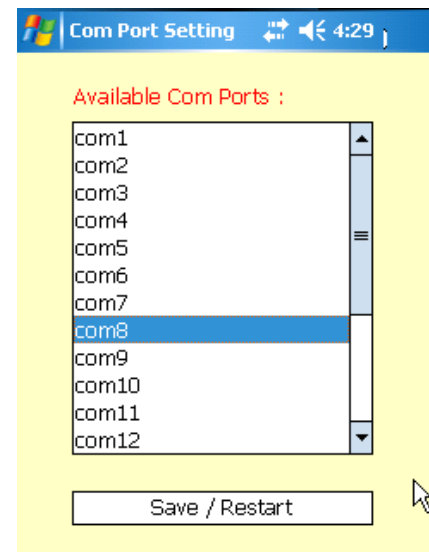
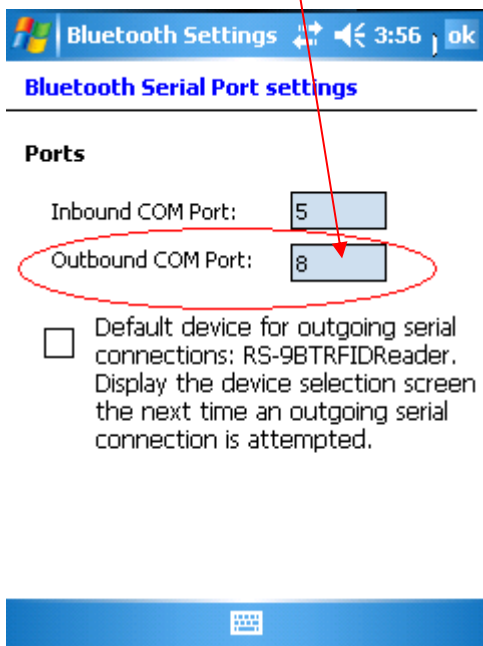
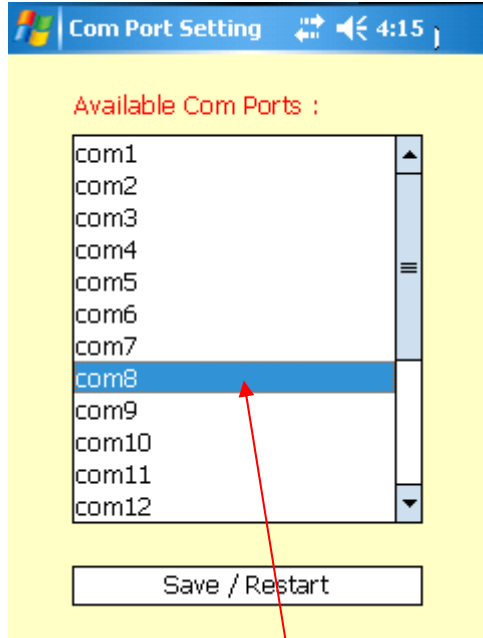


- ❖ Get the PDA connected with a PC via **Microsoft ActiveSync**, copy “**N330.cab**” from the product CD onto any folder on the PDA, then click on this cab file on the PDA for the installation of testing software.

NOTE: N330 PDA testing software requires Microsoft .NET CF Framework V2.0 to be pre-installed on the PDA side first (only for windows Mobile 5.0 or CE 5.0 operating system), users may get this .NET framework downloaded from the Microsoft website for free, or could find a copy of that on the product CD which is coming with N330 product. If the PDA is running at Windows Mobile 6.0 (or above version), there is no need to pre-install the .NET CF Framework.

- ❖ The default installation directory for N330 testing software will be at “**My Device**”->“**program Files**”->“**NephSystem**”->“**N330**”->“**N330.exe**”
- ❖ For the first time of running this software, there is a Com port setting panel will be automatically popped up and users need to manually assign the proper Com port to the software.
- ❖ The Com port which is going to be selected is exactly same as the one shown on the “**Outbound COM port**”. Please refer to the picture above for details. Then click “**Save / Re-start**” button to take the setting effective.

Chapter II Testing Software Installation & Usage

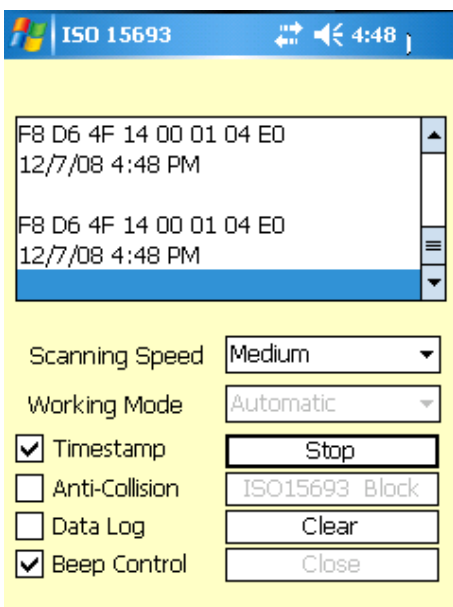


- ❖ If the Windows Mobile/CE 5.0 operating system is being used by the PDA, please make sure that **Microsoft's .NET CF Framework 2.0** is installed properly on the PDA. Users may find the Framework 2.0 from the N330 product CD. Or go to Microsoft website to download it.
- ❖ Get the PDA connected with a PC via **Microsoft ActiveSync**, copy "**N330.cab**" from the product CD onto any folder on the PDA, then click on this cab file on the PDA for the installation of testing software.
- ❖ The default installation directory on the PDA should be located at "**My Device**"->"**program Files**"->"**NephSystem**"->"**N330**"->"**N330.exe**".
- ❖ click on the "**N330.exe**" on the PDA to enable the testing software.
- ❖ For the first time of running this software, there is a Com port setting panel will be automatically popped up and users need to manually assign the proper Com port to the software. See the picture below.

- ❖ Power on the reader and re-start the "**N330.exe**". The main panel of the testing software will pop up and the N330 reader will be connected with the PC via the Bluetooth COM port.



- ❖ N330 is compatible with both ISO14443A and ISO15693 standards. Users should be able to see two separate tabs (ISO15693 or ISO14443A) on the panel. See the above picture.
- ❖ Click on the button of “ISO 15693” on the screen, put a compatible RFID tag (e.g. ISO15693 standard) in front of the reader, and press the “Tag Search” button. Tags’ IDs will be viewed on the display area.



- **Scanning Speed**
The testing speed between two reads. There are three modes available: Slow, medium and Fast
- **Working Mode**
N330 supports two working modes – automatic Scan mode or Push Button scan mode (for ISO15693 only). Users might choose either one of them when testing.
- **TimeStamp**
Enable/Disable time stamp when testing.
- **Anti-Collision**
Enable/Disable repeat scan for same tags.
- **Data Log**
Tested tags’ data can be saved to a local file on the PDA automatically. The default location of log file is located at “My Device” on the PDA.
- **Beep Control**
Enable/Disable beeping function when testing.
- **Tag Search**
Start/Stop reading RFID tag’s ID.
- **ISO15693 Block**
Write/read blocks content (for ISO15693 only).
- **Clear**
Clear the display area.